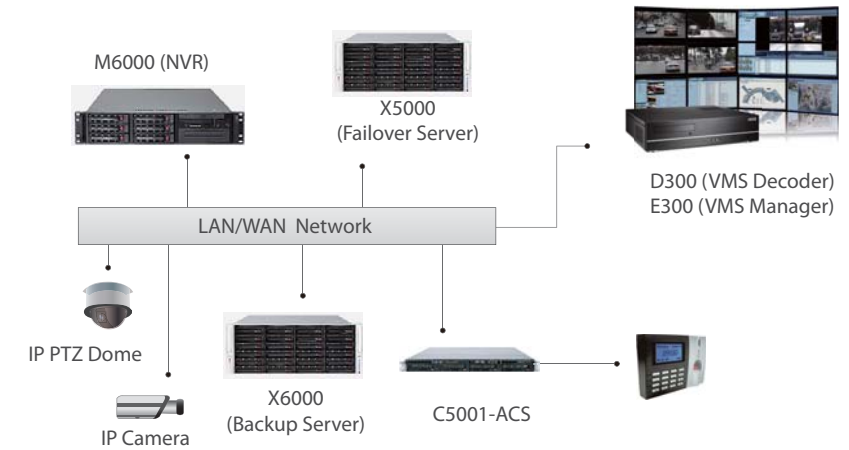


# C5001-ACS



## System Diagram



## Key Feature

- Project-based integration platform enhances multiple subsystems in one large system, including Access control
- Central configuration management for integration of NVR, CMS, VMX, Failover, Backup Server, ACS
- Integration platform for access control, alarm system, etc

Supported Features			Software House	Casi	CEM	Johnson Controls	Identicard	GE	Gallagher	Impro	Saflec
			Ccure800 7.2 & 8.0	Picture Perfect	AC2000 SE	CardKey P1500 & P2000	IdentiPass	FCWnx	Gallagher	Impronet Software Suite	SACS Standard
Event	displays	Invalid card / keypad access	Y	Y	Y	Y	Y	Y	Y	Y	Y
		Door forced open	Y	Y	Y	Y	Y	Y	Y	Y	Y
	Alarm status	Valid card but door open too long	Y	Y	Y	Y	Y	Y	Y	Y	Y
		System offline	Y	Y	Y	Y	Y	Y	Y	Y	Y
	displays	Badge image	Y	-	-	-	-	-	-	-	-
	Intersystem Acknowledgement		Y	Y (3a)	-	-	-	-	-	-	-
	Auto-generation		Y (4a)	Y	-	-	-	-	-	-	-
	Real-time Active Causes		Y	-	Y	-	-	-	-	-	-
System import	Object list import	Y	Y	Y	-	-	-	Y	Y	Y	
Recovery / diagnosis	System notifications	Y	Y	Y	-	-	-	Y	Y	Y	

3a – Due to a limitation of the PicturePerfect RANAPI, Alarm "Acknowledgements" are automatically sent back to Picture Perfect by the SmartNode upon alarm reception and not later when the FacilitySmart operator issues an "Acknowledgement" through the OpsAppbrowser interface.

4a – For CCure Event 'Device' only

## Camera Support List



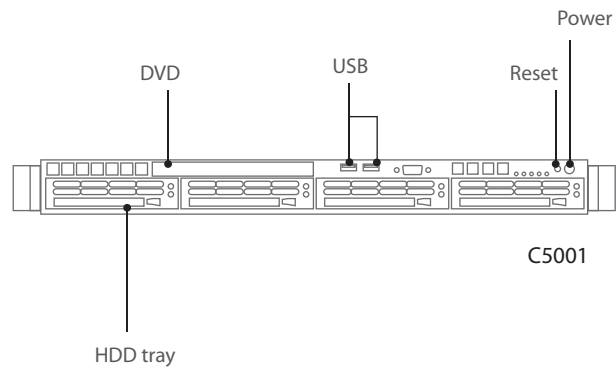


## Vertical Market

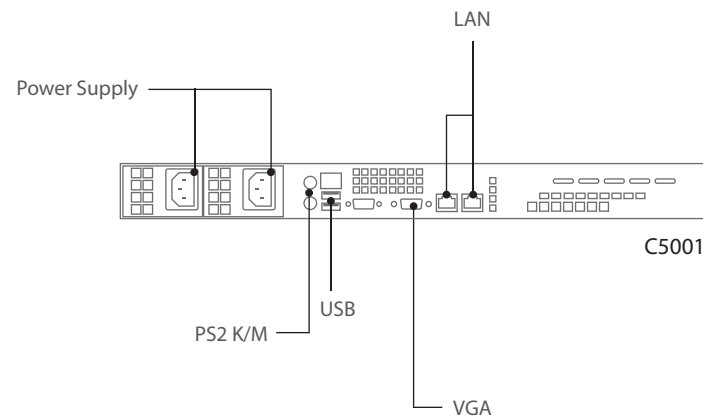
Government complex, city surveillance, casino, transportation, and homeland security projects

# Integration Gateway

### Front Panel Layout



### Rear Panel Layout



### Hardware Specification

Model	C5001- ACS
Processor	Intel® Core™ i3-2120 Processor
Memory	DDR3-1333 16G
Operation System	WES7 (Embedded)
Hard Disk Drive (Hot Swappable)	2
RAID Level	RAID 1
Megapixel Recording	D1, 1.3M~20M
Display Port	1
LAN Portng	Gigabit LAN Port x 2 , Dilicated IPMI x 1
USB Port	Front x 2 , Rear x 8 (USB 3.0 @ Rear x 2)
Dimensions (DxWxH) mm	503 x 437 x 43
Power Supply	400W (1+1) Redundant Power Supply
Voltage	100-240VAC(50~60Hz)
Remote Accessm	E300

All specifications are subject to change without notice

### C5001 Series

