



## E150 CMS Manager

Controls multiple NVRs in a network, with enterprise and multi-site design for middle-scale project (64~300ch).



Centralized to Manage up to 300ch Cameras and 15 NVRs



72 ch Real-time Display on Dual Monitors



Centralized Video Wall Solution



Alarm Notification by Pop-up, E-mail, DI/DO, Trigger Recording

# GVD E150

## CMS Manager



GVD E150, a centralized platform, manages up to 300ch cameras and displays 72ch real-time video on dual monitor. It supports 16ch synchronous playback, multicast, video wall, tour, ROI, VMD, IVA, e-map, event, alarm, notification, digital watermark video export functions which allow user to easily manage and control surveillance system. GVD E150 is reliable and suitable for large scale project, including government buildings, offices, factories, campuses, hotels, banks, retail chain stores, shopping malls, etc.

### Key Feature



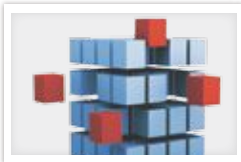
#### Manages over 300ch Cameras

GVD E150 can handle 64-300 channel video via different kinds of NVR as enterprise HD NVR, standalone NVR, etc.



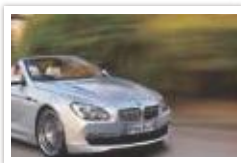
#### 72 ch Real-time Display

GVD E150 creates powerful performance video for 72ch real-time display on dual monitors.



#### HD Empowerment

GVD unique software has advanced features such as MVP, ROI, Turbo Mode Plus, etc. that offers high performance video display.



#### Smooth Video with Exclusive Video Playout Control

Built-in Exclusive Video Playout Control technology that enables smooth video and limiting of video quality degradation for different situations like uniform Camera Time Stamp, Unstable Network Conditions.



#### IVA Functions and POS management

GVD E150 manages all different POS machines via NVRs, that's suitable for retail chain stores. The CMS manager also combines with IVA functions such as MVP, E-fences, Missing object, foreign object for more analyses.



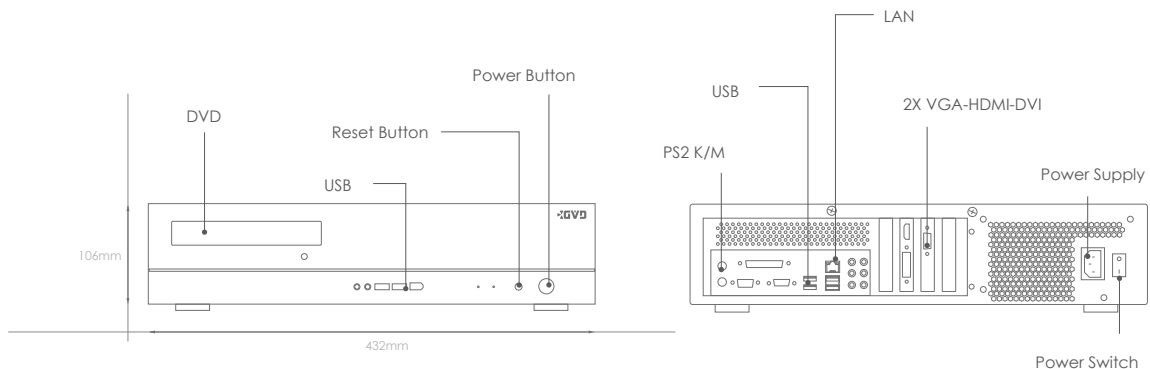
#### Powerful Alarm Management

Alarm notification by Pop-up, E-mail, DI/DO (Modbus Support) when video loss, sensor triggered, HDD crashed, system crashed, abnormal transaction, e-fence, video motion detection, etc.

## System Diagram



## Dimensions



## Specification

Product		E150
System	Item	CMS Manager
	CPU	Intel Core i7-2600 (3.43GHz/8M cache)
	Memory	DDR3-1333 4G
	Operation System (OS)	Windows 7 Embedded
	Network Protocols	TCP/IP, UDP, HTTP, HTTPS, SMTP, SNMPv3, DNS, DHCP, NTP, ARP, ICMP, FTPc, FTPs, DDNS, RTP (RTCP, RTSP), IGMPv3, UPnP, CIFS, NFS, IEC802.1x
	Language	English, Spanish, French, Dutch, Italian, Japanese, Chinese, etc.
	Watchdog	Supports Hardware Watchdog, Software Watchdog
	System Update	Supports NVR Software Update
Video	Display Performance	D1@2160fps / 1.3MP@1020fps / 2MP@525fps (Turbo Mode - Real Time)
	Video Codec	H.264 High Profile, MPEG4, M-JPEG, MxPEG
	Audio Codec	Two-Way Audio, G.711, G.726, AAC
	Streaming Type	Unicasting, Multicasting
Software		
Setting	Configurations	Configurations of NVR, Camera, Event, Alarm, Device, DI/DO, etc.
	User Authority	Export Video Clip, PTZ Control, Live View, Playback, Alarm Search, Configuration, Remote System Control, etc.
E-map	E-map	Mapping Cameras and DI/DO Points, Map Hyperlink
PTZ	PTZ Control	PTZ Control, Preset Point, Patrol, Digital PTZ
Live View	Display Pattern	1, 2, 3, 4, 5, 6, 8, 9, 12, 13, 16, 18, 24, 25, 36, 48, 64
	Viewing Operation	ROI (Region of Interest), Tour
	Intelligent Video Analytics	E-fence, Motion Detection, People Counting
Playback	Video Search	Time, Event, Alarm
	Synchronous Playback	up to 16ch
	Video Playback	Time Slider Control Panel (Forward, Backward, Speed Control, Sync. Playback)
	Video Export	Video Export via USB (Supports .avi and .ava Format), Digital Watermark
IVA	Intelligent Search	Missing Object, Foreign Object
	Intelligent Video Analytics	E-fence, Video Motion Detection
Event	Event Log	Event logs of System, Cameras, User, etc.
Alarm	Alarm Event / Search	Video Loss, Sensor Triggered, HDD Crashed, System Crashed, Abnormal Transaction, E-fence, Video Motion Detection
	Alarm Notification	Pop-up, E-mail, DI/DO, Trigger Recording
	Alarm In / Alarm Out	DI/DO Control, Modbus (Master, Slave)
POS	Transaction Viewing	Live Viewing with Transaction data
	Search / Playback	Time, Item (Keyword), Price with Transaction data and Video
	Abnormal Transaction	Alarm Rule (Item, Value), Alarm Popup, Alarm Search
Hardware		
Network	Lan Port	Gigabit Lan (RJ45, On-board Teaming) x2
	Ethernet	10/100/1000M Auto Negotiation
Display	Local Display	VGAx1, HDMIx1, DVI-Dx1 (Support Two Video Outputs Simultaneously)
	Local Display Resolution	1920x1200
Media Device	Hard Disk Drive	SATA
	Hard Disk Trays (Bays)	1 pcs
	Hard Disk Capacity	500 GB
	Media Drive	DVD Drive
Port	USB Port	USB 2.0 Front x2, Rear x4
	Communication Port	RS232 (Header) x1 - Onboard I/O
	Audio Port	Rear : MIC-in x1, Line-out x1, Line-in x1
Power	Power Voltage	100~240 Vac, 50-60 Hz
	Power Consumption	127W
Environment	Operation Temperature	0°C ~ 40°C (32°F ~ 104°F)
	Storage Temperature	-10°C ~ 60°C (14°F ~ 140°F)
	Operation Humidity	0% ~ 90%
	Storage Humidity	5% ~ 95%
Appearance	Dimensions	432(W)x106(H)x427(D)mm
	Net Weight	7.0 Kg
	Chassis	Alumnum, Black
Expansion	Keyboard	K205

\*All specifications are subject to change without notice